

Redevelopment In Progress

Huntley Generating Station

Tonawanda, New York

Originally built:
1916

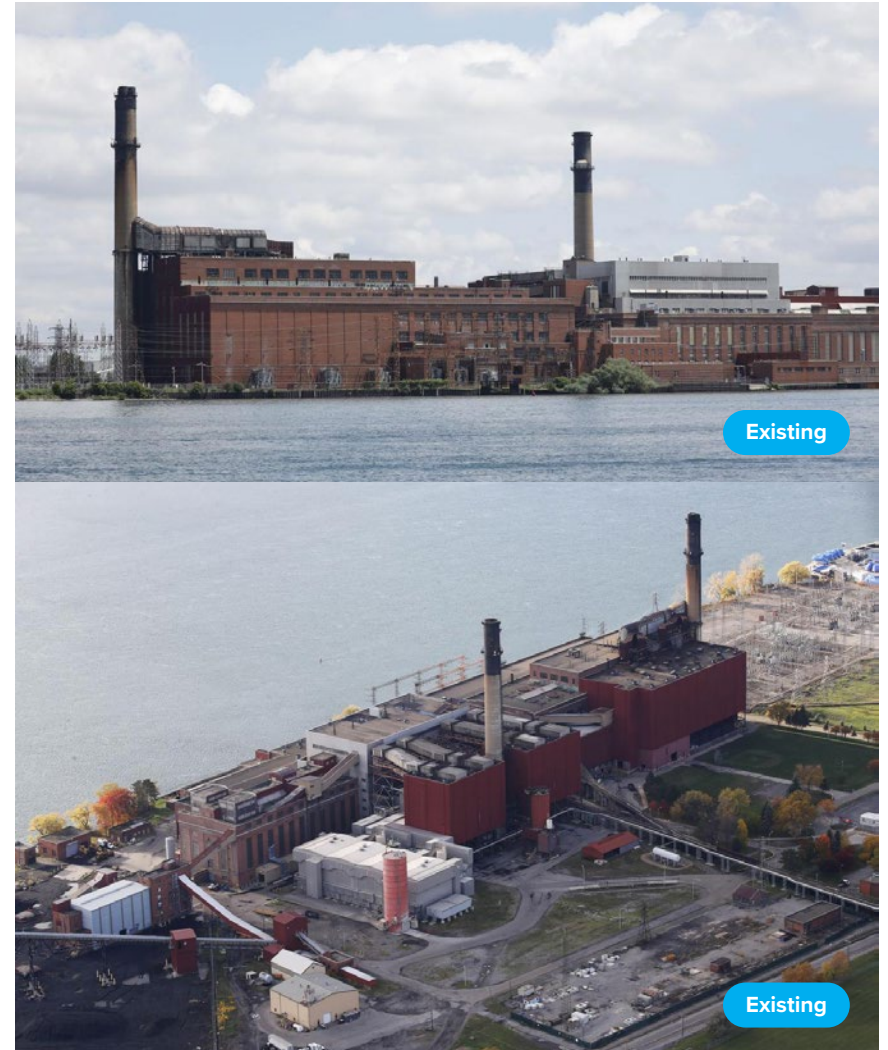
Type:
Coal-fired

Capacity:
1,150 MW

Decommissioned:
2017

Site size:
219 acres

NRG's Huntley Generating Station operated from 1916 to 2017. For two and a half years before the official closure announcement, the Huntley Alliance, a group of stakeholders from local organizations, the school district, and the town, held meetings, public listening sessions, and conducted surveys to plan for Huntley's shutdown. In 2016, with support from a state senator, a grant was secured from the U.S. Economic Development Administration (EDA) to create *Tonawanda Tomorrow*, a comprehensive plan for the town's post-Huntley future. After the facility closed in 2017, the Town of Tonawanda acquired the site by eminent domain after NRG's attempts to sell the site were unsuccessful. As of August 2023, the town advertised a Call for Expressions of Interest to redevelop a portion of the site for renewable energy use.



Key Findings

Plan ahead

A proactive approach to transition is important for securing funding and identifying reuse options.

Be creative about funding

Advocates lobbied state lawmakers to create a fund to support the town and school district for 5 years after closure.

Engage stakeholders

Working with the local IBEW union ensured that all 79 plant workers were able to find new jobs or retire.

Expect bumps in the road

Despite proactive planning, securing a developer for the site has proven challenging.