

Citizens are proposing *restoration* of passenger train service from Troy to Albany via the Rensselaer AMTRAK station. New commuter stations would be built in Troy and Albany. This service can use the existing track from Troy along the Hudson to Rensselaer and to Albany over the reconstructed rail bridge from Rensselaer to Albany. With a recreation trail on that Bridge, a bikeway can connect from Troy to Albany.

*Let's
Support
a New*

T.R.A.C.T.

Troy-Rensselaer-Albany Commuter Train

To revitalize our downtowns



This service will:

- Improve commuter transit between South Troy and Albany
- Provide rail access to the AMTRAK trains

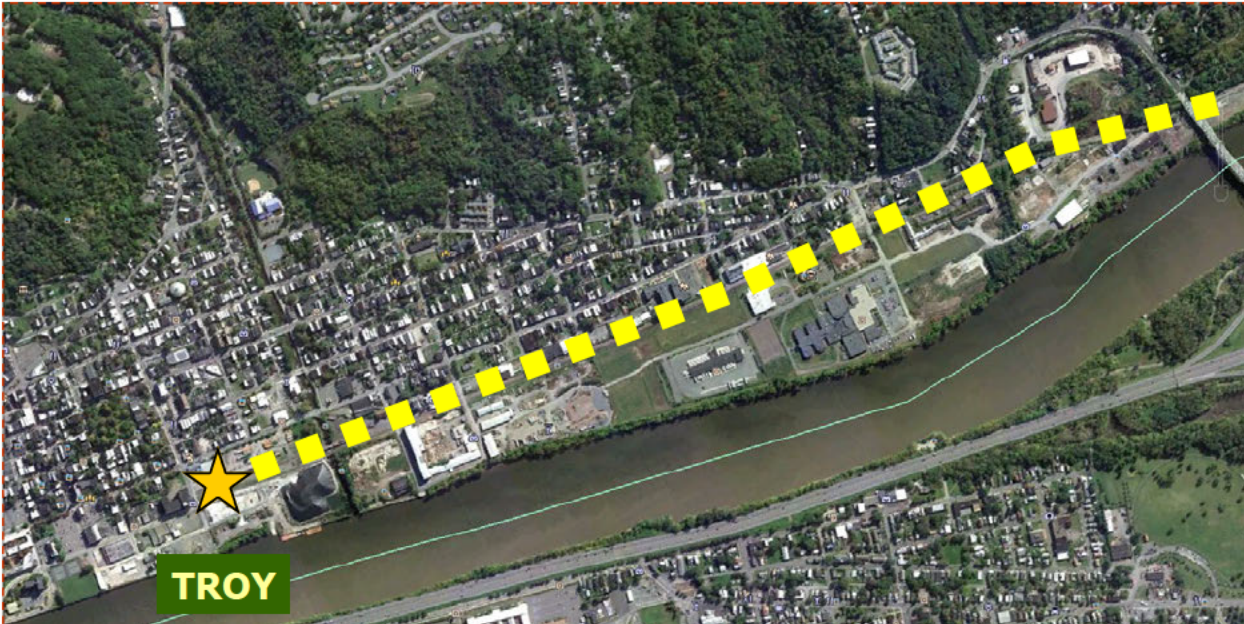
- Initiate more regional rail transit
- Foster development in Troy, Rensselaer, and the north Albany business district.

We can make it happen by:

- Supporting this plan
- Getting our Officials behind this plan
- Getting the project on the Regional Transportation Plan

- For more information, contact:
Gary Nelson, Troy [REDACTED]

Follow us on:



A commuter station can be built in Troy where the existing track—now used for freight service—ends in the vicinity of Adams and First Streets. This location can be tied by shuttle and parking to central Troy. Other stops in South Troy will give improved transit to Albany and can connect to CDTA buses, the Technology Park and HVCC. This service will stimulate redevelopment of the old industrial area along the track and reinforce the comeback of South Troy. The corridor is ideal for continuation of the Hudson River bikeway from Albany into Troy.

...to AMTRAK and Albany



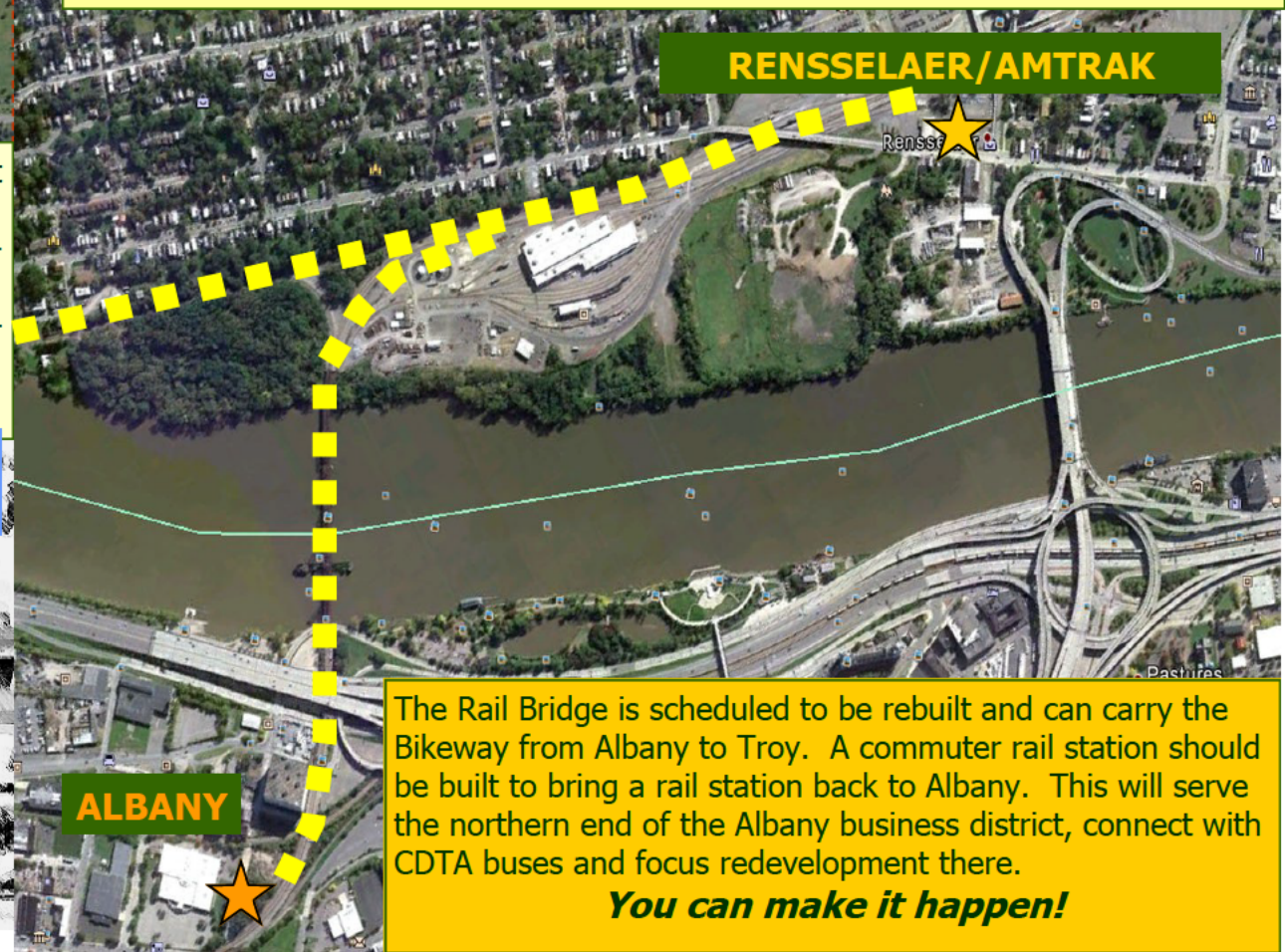
Your commuter train from Troy...



T.R.A.C.T.

Troy-Rensselaer-Albany Commuter Train

The track from Troy connects directly to the Rensselaer AMTRAK Station, also serving the north end of Rensselaer. Commuter, other regional train service and a bike/walk trail can continue over the rail bridge.



The Rail Bridge is scheduled to be rebuilt and can carry the Bikeway from Albany to Troy. A commuter rail station should be built to bring a rail station back to Albany. This will serve the northern end of the Albany business district, connect with CDTA buses and focus redevelopment there.
You can make it happen!