

CLCPA SCOPING PLAN
PUBLIC COMMENT SESSION
SYRACUSE, NY 13210
APRIL 26, 2022

SUBMITTED BY:

COLIN BEIER
SUNY ESF + CAFRI



Forest Carbon Mapping & Monitoring for NYS

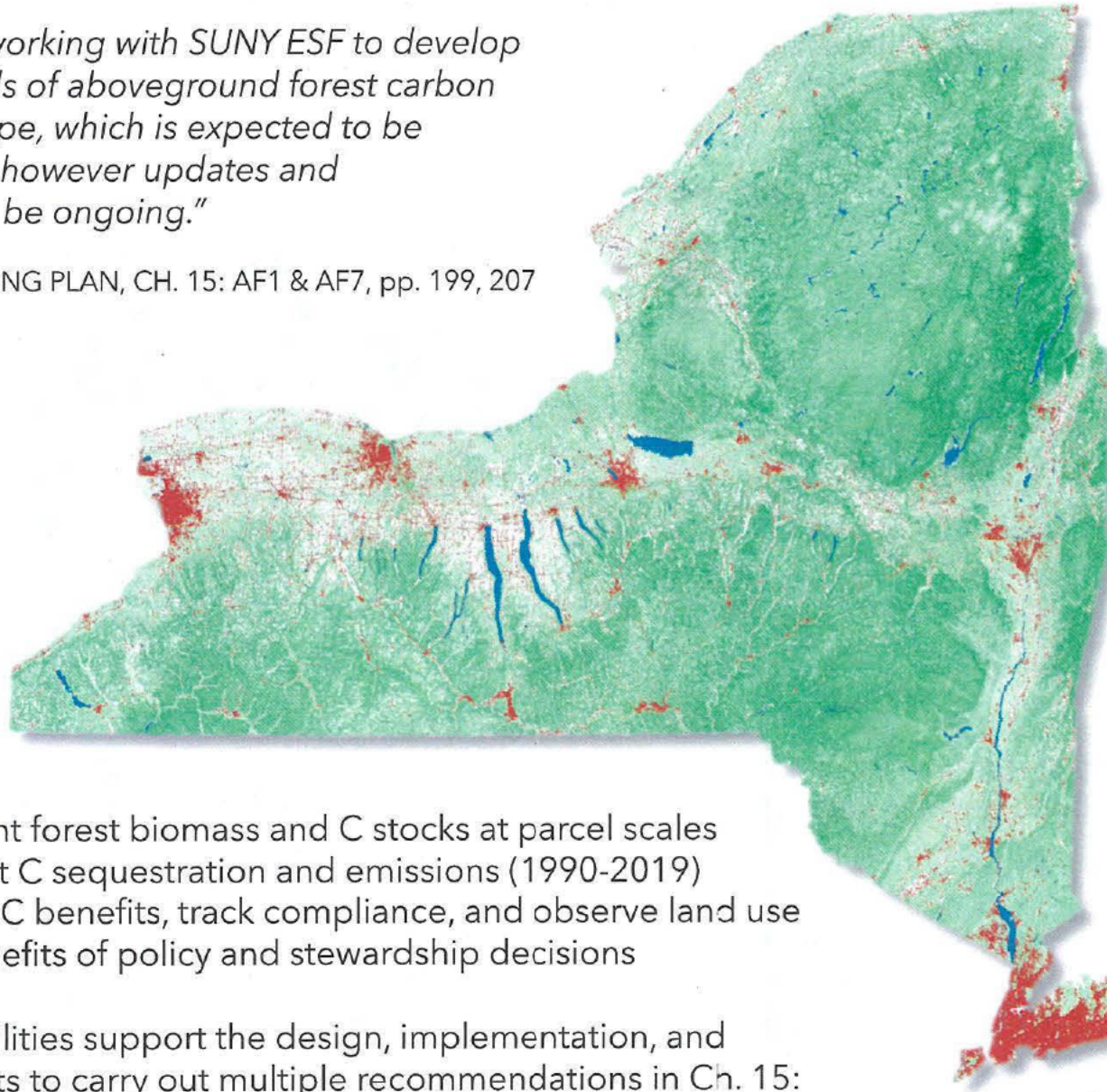
"DEC is currently working with SUNY ESF to develop site-specific models of aboveground forest carbon across the landscape, which is expected to be complete in 2022, however updates and improvements will be ongoing."

CLCPA SCOPING PLAN, CH. 15: AF1 & AF7, pp. 199, 207

CAFRI works with NYS DEC and the US Forest Service to build and operate a New York **statewide carbon benefits mapping system** that allows us to:

- Estimate current forest biomass and C stocks at parcel scales
- Estimate recent C sequestration and emissions (1990-2019)
- Monitor future C benefits, track compliance, and observe land use
- Forecast C benefits of policy and stewardship decisions

All of these capabilities support the design, implementation, and evaluation of efforts to carry out multiple recommendations in Ch. 15: Agriculture & Forestry of the CLCPA Scoping Plan (see green sidebar)



Scoping Plan Recommendations

AF1. Identify where Forest Management would Provide the Greatest Benefit

AF3. Maintain and Improve Sustainable Forest Management Practices & Mitigation Strategies

AF4. Assist Landowners in Implementation of Sustainable Forest Management & Mitigation Strategies

AF5. Support Local Communities in Forest Protection & Management

AF7. Monitor Progress & Advance Forestry Science and Technology

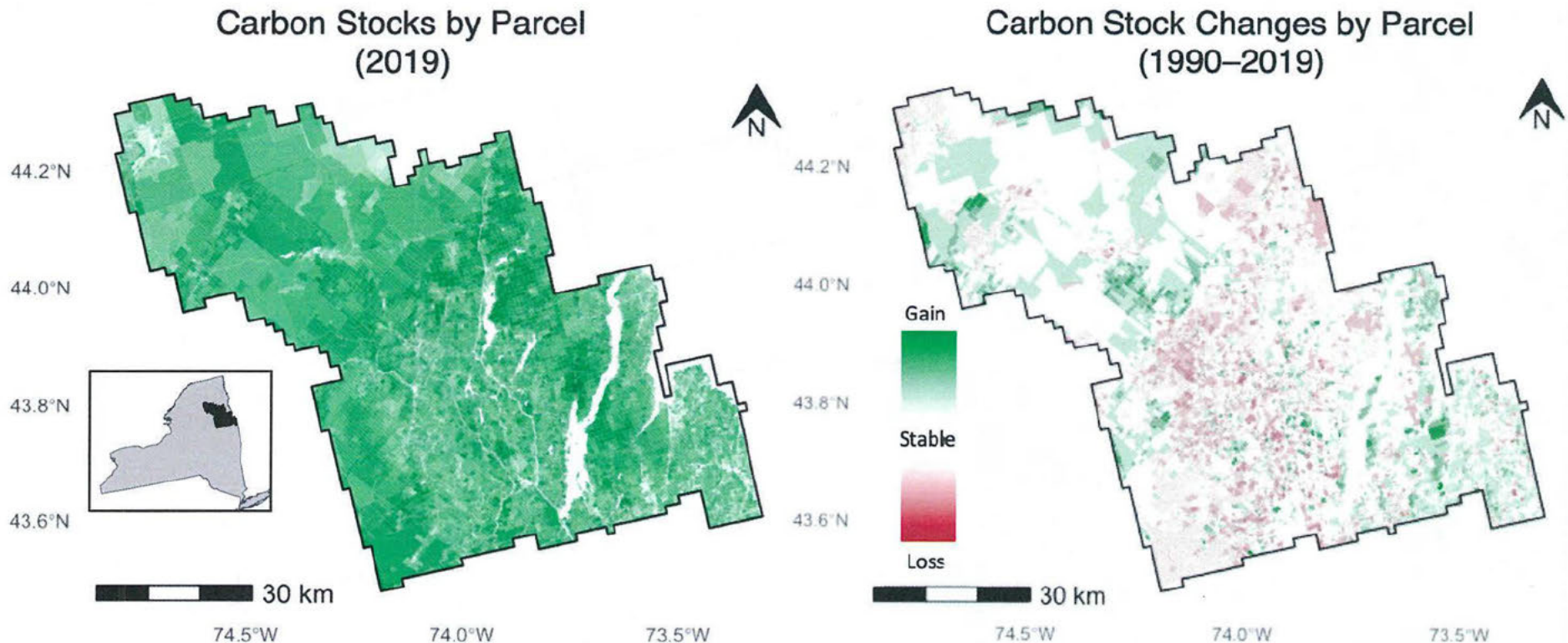
Applications: Parcel-Level Carbon Accounting



Climate & Applied Forest Research Institute
www.esf.edu/cafri-ny

Parcel-level mapping and monitoring directly supports recommendations AF1, AF3, and AF7, by enabling DEC and landowners to track climate benefits and land use change using GHG accounting methods that are IPCC-compliant and consistent with US EPA.

Questions? Contact:
Dr. Colin Beier
cbeier@esf.edu
315 470 6578



We combine field inventory, remote sensing and machine-learning to produce accurate, unbiased and fine-scale (30m) maps of forest biomass and carbon stocks over time. These maps estimate past and current carbon sequestration and storage, and help us forecast these climate benefits under different scenarios, on a parcel-by-parcel basis.



State University of New York College of
Environmental Science and Forestry