



NYSERDA

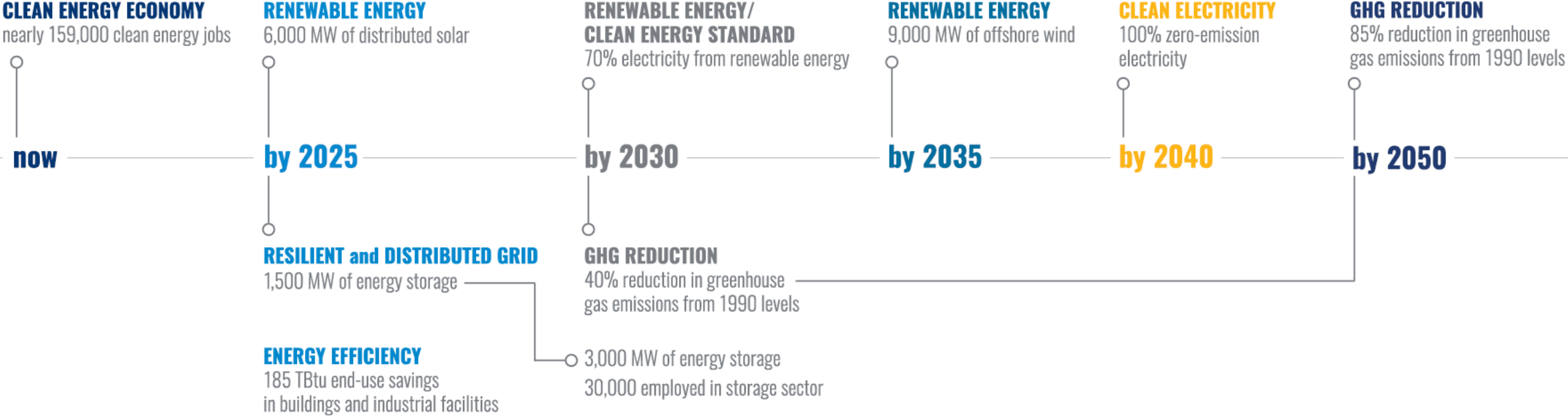
New York State Responses to Draft Proposed Sale Notice

BOEM New York Bight Intergovernmental Task Force | April 14 & 16, 2021

Adrienne Downey, Principal Engineer, Offshore Wind

Greg Lampman, Program Manager, Environmental Research

New York State Clean Energy Goals



New York State Offshore Wind Portfolio:

5 projects / 4,316 MW / 6,800 jobs / \$12.1B Economic Activity

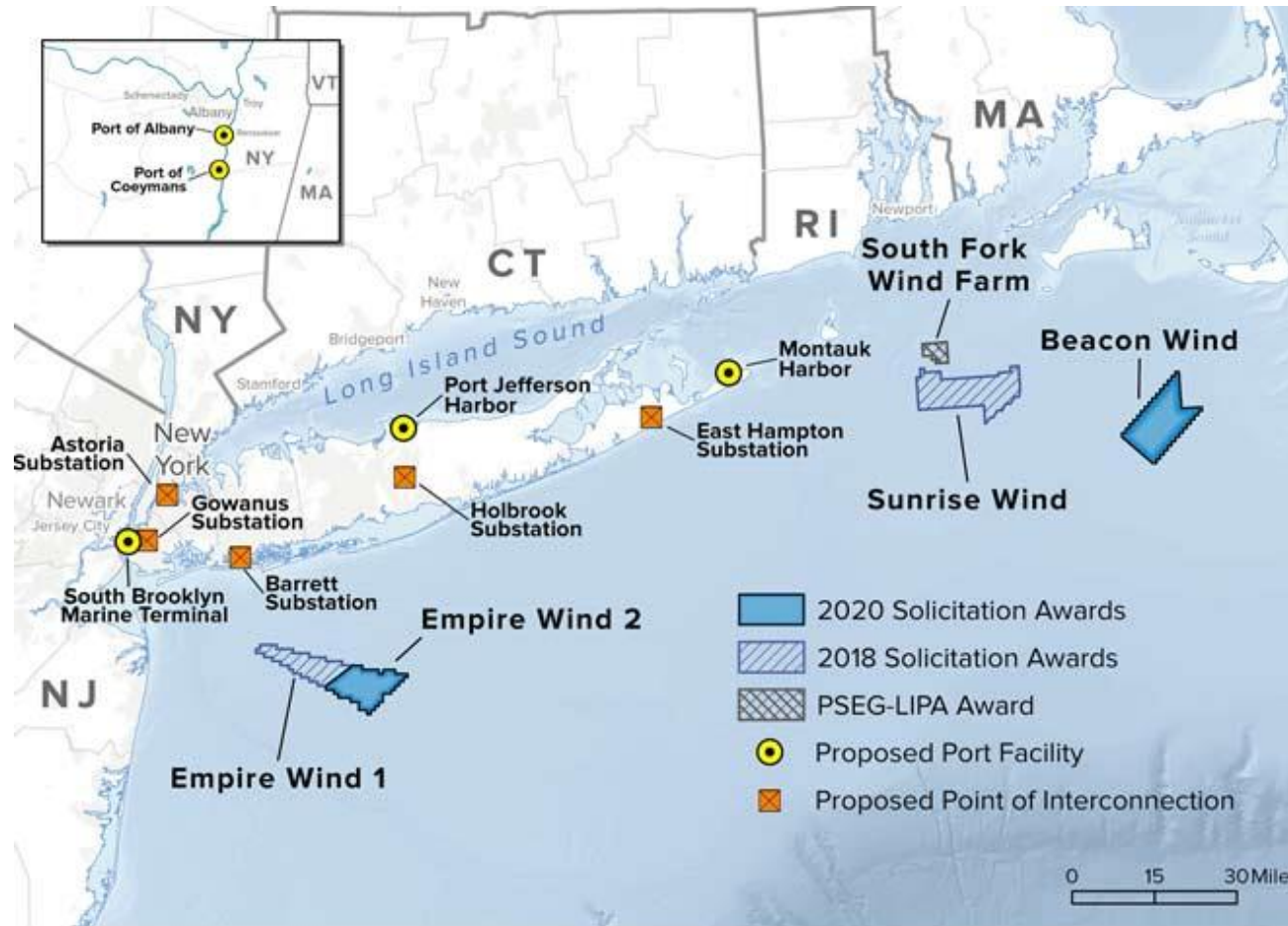
Port of Albany:
Marmen/Welcon Tower Factory



Port of Coeymans:
Gravity Based Foundation Manufacturing



South Brooklyn Marine Terminal
Staging and Assembly,
Operations & Maintenance (O&M)



SUNY Stony Brook & Farmingdale:
\$20M Offshore Wind Training
Institute (OWTI)



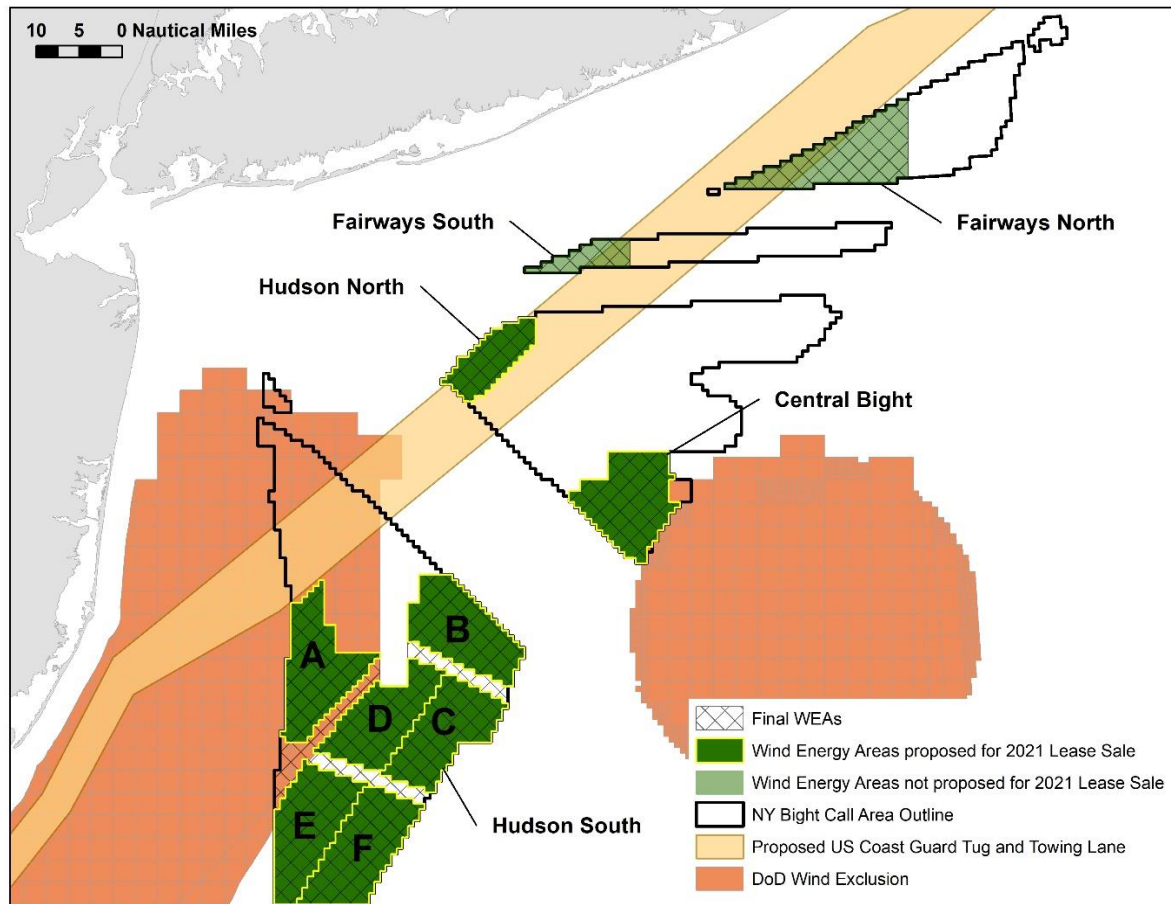
Port Jefferson:
Operations & Maintenance (O&M)



East Setauket:
\$10M National Offshore Wind
Training Center (Ørsted & Suffolk
County Community College)



New York State: Responses to draft PSN



Minimum Bid

Proposed: Increase the minimum bid from \$2.00 to \$100.00 per acre.

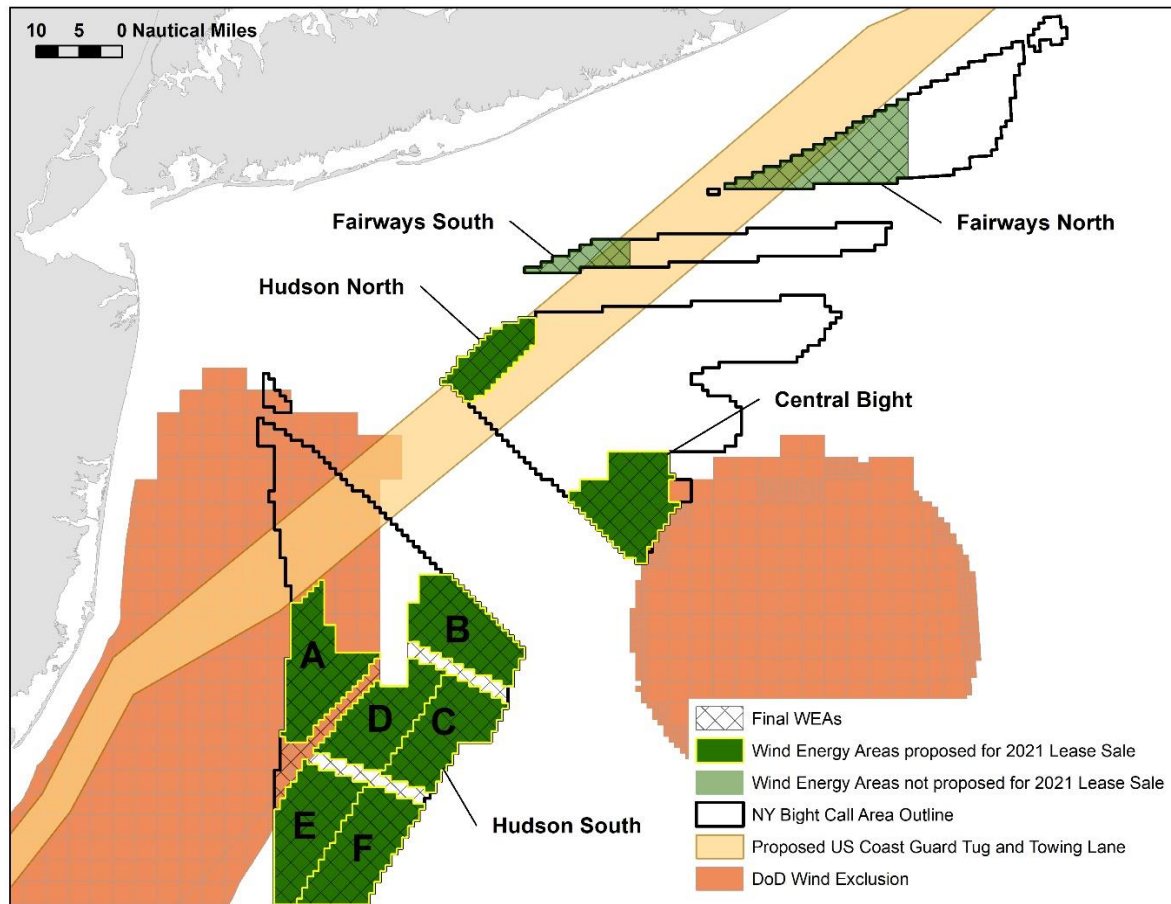
> **NYS Response: Neutral on this factor.**

Operations Term

Proposed: 33-year operations terms, unchanged.

> **NYS Response: Supportive of the current 33-year operations term as a minimum threshold.**

New York State: Responses to draft PSN

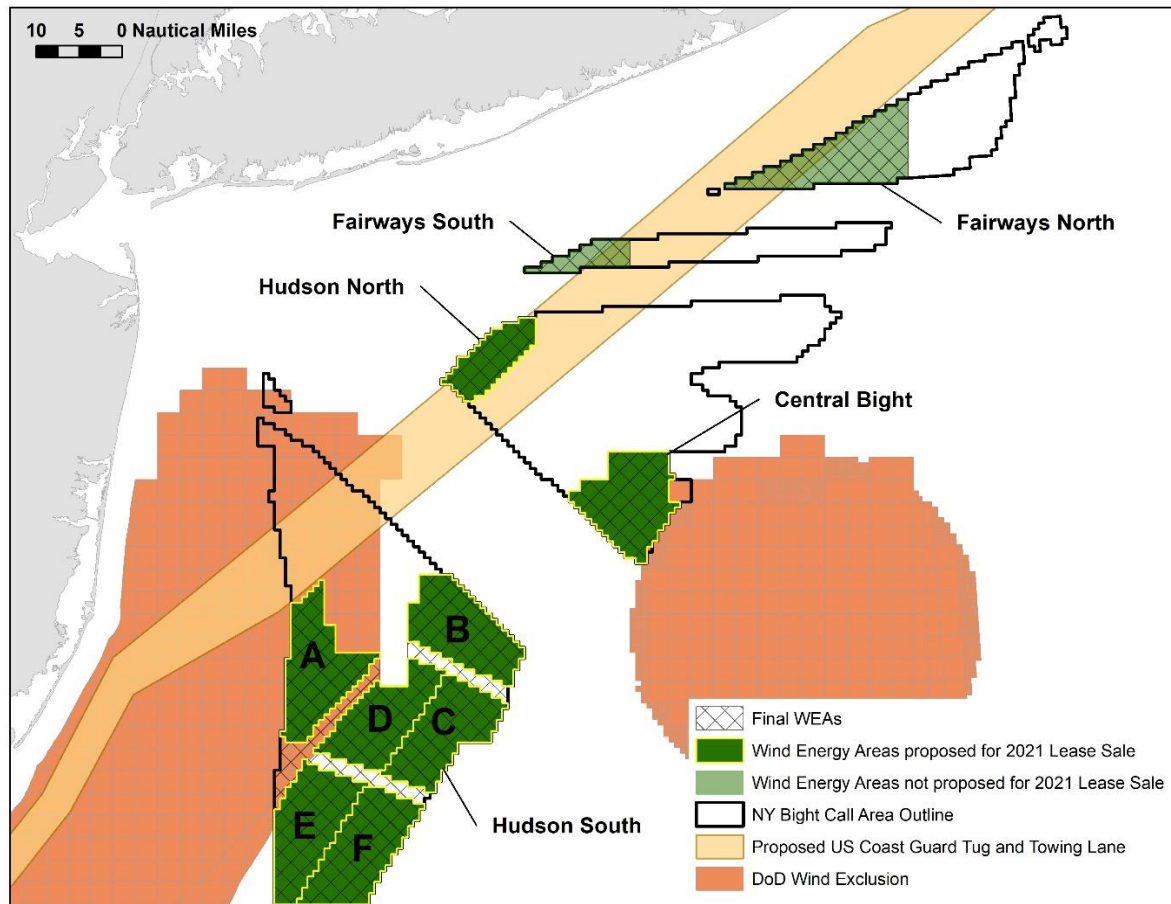


Limits Per Bidder

Proposed: BOEM may limit bidders to one or two lease areas depending upon the number of lease areas offered.

- > **NYS Response: Supportive to encourage leaseholder diversity.**
- > **NYS additionally encourages BOEM to consider a tightly sequenced, continuous auction process in 2021 to resolve the sale of each lease area prior to initiating sale of next lease area to promote clarity.**

New York State: Responses to draft PSN

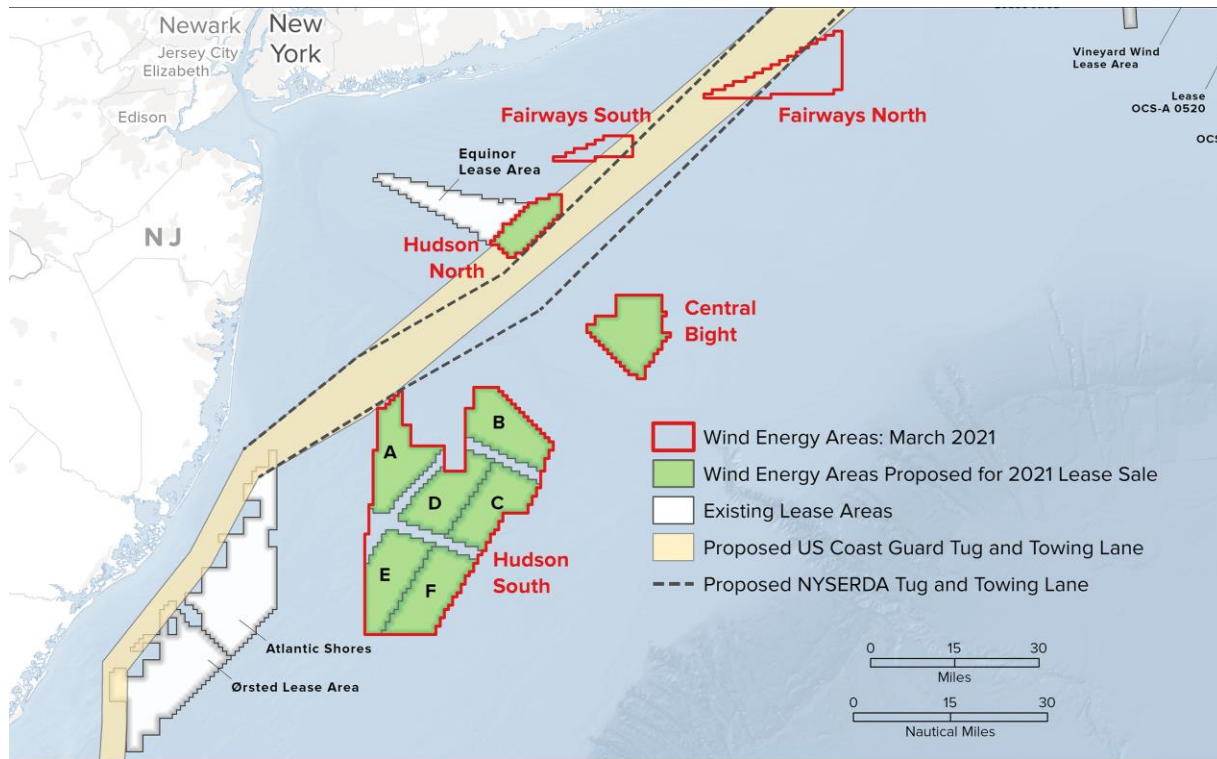


DOD Lease Stipulations

Proposed: Leases within the Hudson South WEA would be limited to 1,000 ft above sea level, unless otherwise approved by BOEM.

- > **NYS Response: Agree that national security considerations are an important consideration in siting and design of offshore wind.**
- > **Support efforts to ensure states can avail themselves of next generation technology.**

New York State: Responses to draft PSN

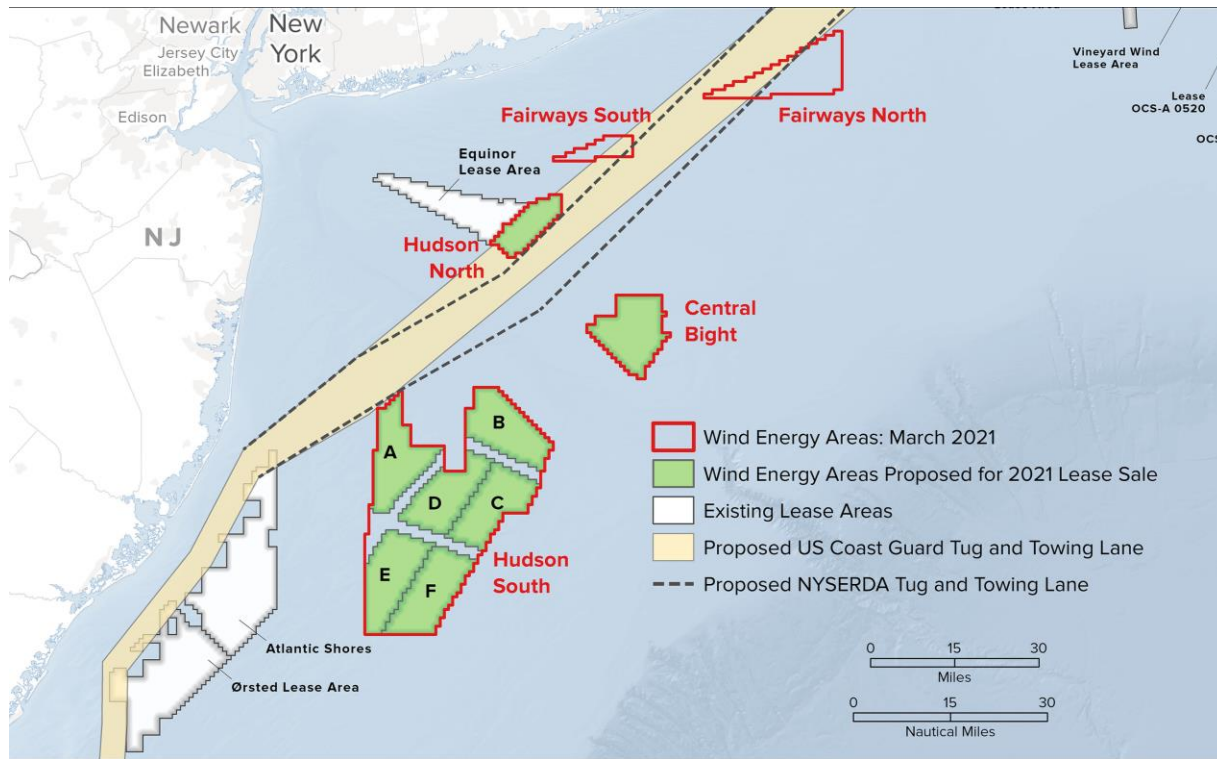


Number, Size, Orientation, and Location of Proposed Leases

Proposed: Eight (8) Wind Energy Areas proposed for 2021 Lease Sale, each approximately 1GW, totaling ~7,616 MW of installed capacity.

- > **NYS Response: The proposed eight (8) 2021 Lease Sales are acceptable in their number, size, shape, orientation, and location.**
- > **Proposed Leases reflect good balance to maximizing energy density while accommodating transit lanes for safe and efficient passage by fishermen and other maritime users.**
- > **Encourage BOEM to work closely with the USCG, DOD, and the maritime shipping industry to mitigate conflicts including viability of the Hudson North and the Hudson South Lease Area "A" whose inclusion will be important to achieve regional offshore wind goals.**

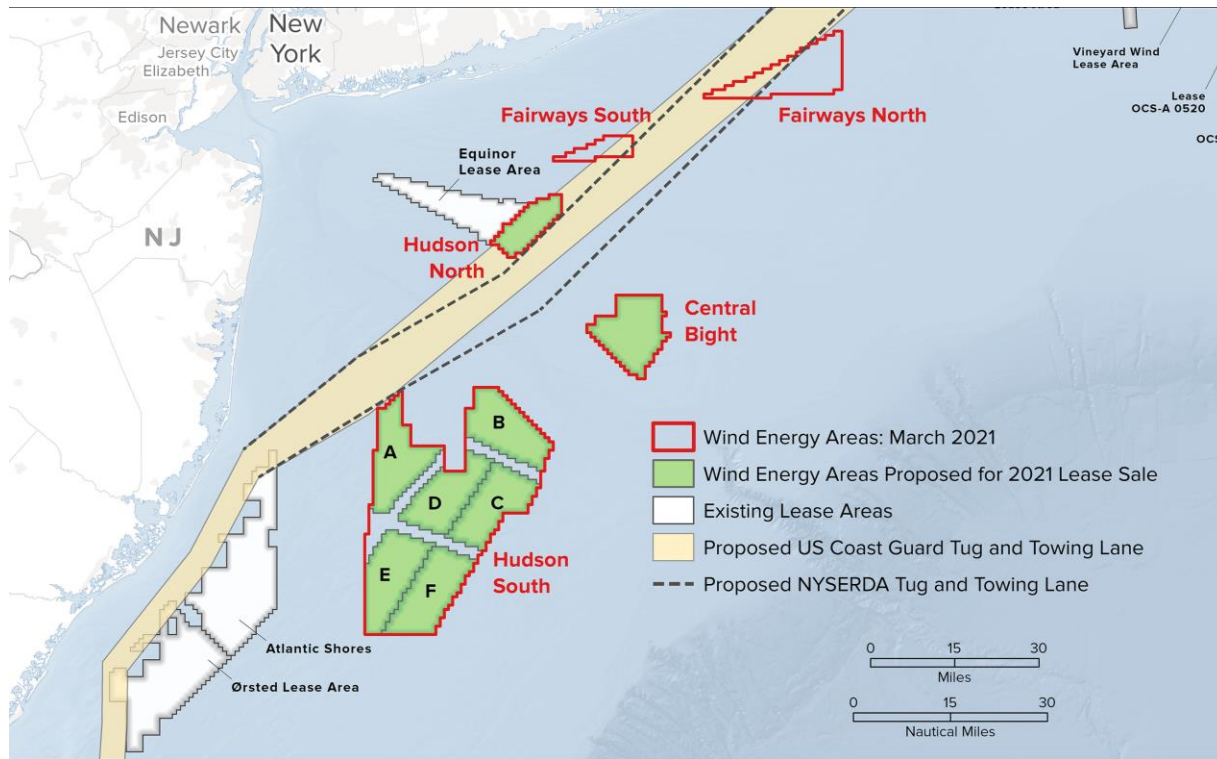
New York State: Responses to draft PSN



Number, Size, Orientation, and Location of Proposed Leases
Proposed: Eight (8) Wind Energy Areas proposed for 2021 Lease Sale, each approximately 1GW, totaling 7,616 MW of installed capacity.

- > **Continue to discourage leasing of the Fairways North and South based on maritime and fishing risks as well as distance from shore.**
- > **Encourage BOEM to solicit additional stakeholder input and prioritize coordination of turbine layouts among and between leases to maximize access to, and through, turbine arrays; including requiring lessee good faith engagement with key stakeholders.**

New York State: Responses to draft PSN

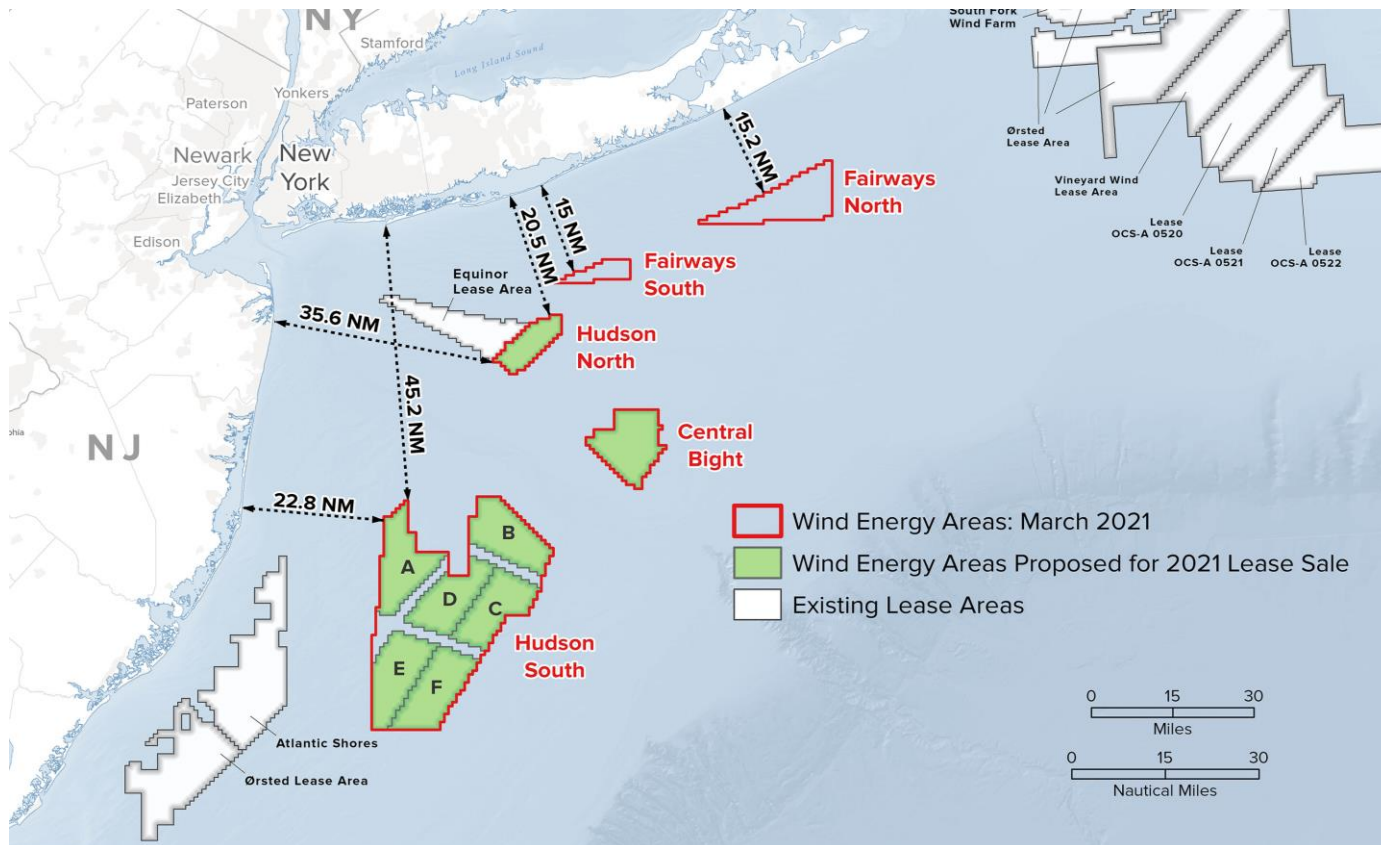


Transit Corridors

Proposed: Defined transit lanes and widths oriented in general alignment with the Transit Study.

- > **NYS Response: Satisfied with the Lease Area layout provided by BOEM including the incorporation of transit corridors upfront in the leasing process.**
- > **Encourage BOEM to require lease holders to work with the commercial fishing industry to develop project layouts to balance energy production and commercial fishing access.**

New York State: Responses to draft PSN

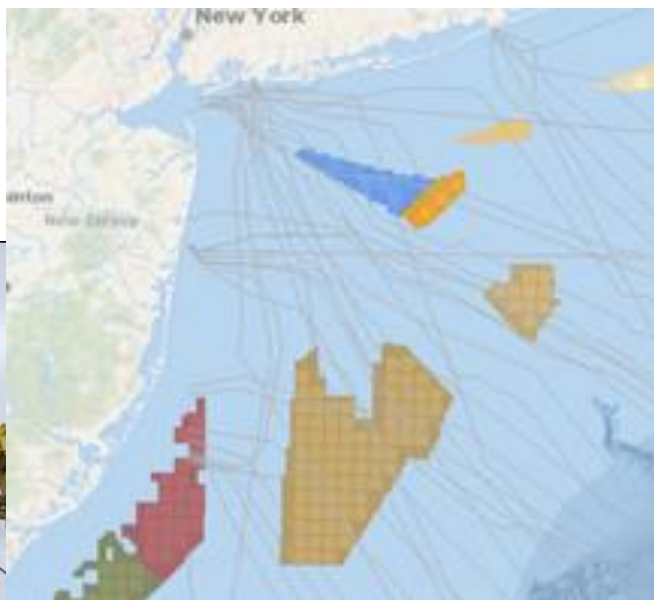


Visual Impacts

Proposed: BOEM seeks input on the most sensitive viewpoints onshore.

- > **NYS Response: All distances of Wind Energy Areas (WEAs) proposed for 2021 Lease Sale (excludes Fairways) are greater than 20.5 nautical miles (23.5 statute miles).**
- > **Visual impacts to either NYS or New Jersey are expected to be minimal or non-existent.**
- > **Proposed 2021 Lease Sale WEA are consistent with NYS recommendations through the NYS Offshore Wind Master Plan.**

New York State: Responses to draft PSN



Transmission & Cable Landfall

Proposed: BOEM offering continued dialogue with the Task Force and interested parties and input on landfall locations.

- > **NYS Response: Recent Initial NY Power Grid Study (PSC Case No. 20-E-0197) offers important insights into offshore and onshore transmission design recommendations.**
- > **Encourage BOEM to rely on NYS Article VII process within State waters as a means of ensuring complementary and thorough review without redundancy.**
- > **Continued collaboration with BOEM and federal agencies on cable installation designs (e.g., Minimal burial depths/least impact crossings) in coordination with stakeholders will be beneficial to minimize impacts.**

New York State: Responses to draft PSN



Lease Stipulations Regarding Protected Species

Proposed: Improve consistency of the project design criteria (PDCs) and best management practices (BMPs) with recent National Marine Fisheries Service incidental harassment authorizations for site survey and data collection.

- > NYS Response: Applaud efforts to streamline permitting and oversight processes and implement proven measures to support important wildlife protections.**

Thank you



nysderda.ny.gov

Follow NYSDERDA

