

Appendix G-1

New York State Weather Normalized Residential Energy Consumption, 1980–2021

Figure G-1.

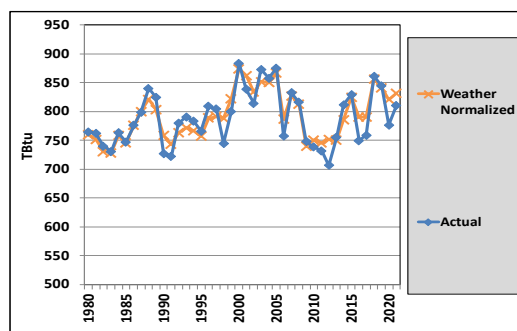


Table G-1. (In Trillion Btu)

Year	Coal	Natural Gas	Distillate ¹	Kerosene	LPG	Total Petroleum	Wood	Electricity	Solar ²	Geothermal	Total
	TBtu	TBtu	TBtu	TBtu	TBtu	TBtu	TBtu	TBtu	TBtu	TBtu	TBtu
1980	1.7	339.5	217.4	9.8	9.1	236.2	77.8	104.1	0.0	0.0	759.4
1981	2.1	338.8	200.4	8.6	9.8	218.7	87.0	104.8	0.0	0.0	751.5
1982	2.6	346.3	181.2	10.4	9.1	200.7	76.4	104.9	0.0	0.0	730.8
1983	1.5	329.4	170.6	8.5	10.5	189.6	99.2	108.2	0.0	0.0	728.0
1984	2.3	343.6	199.6	20.2	10.6	230.3	69.7	112.1	0.0	0.0	758.0
1985	2.3	328.2	201.1	18.3	11.4	230.7	72.7	112.0	0.0	0.0	745.9
1986	2.6	345.9	221.2	12.5	11.6	245.2	66.6	115.4	0.0	0.0	775.7
1987	2.2	344.9	241.4	18.2	13.5	273.0	59.4	120.4	0.0	0.0	799.8
1988	1.7	359.0	236.3	23.7	13.3	273.3	59.9	127.4	0.0	0.0	821.4
1989	1.6	364.4	218.0	15.8	14.0	247.8	60.1	129.3	0.3	0.0	803.4
1990	1.4	365.1	193.7	9.9	14.1	217.8	41.9	131.6	0.3	0.0	758.0
1991	1.3	360.8	175.3	11.8	17.7	204.8	42.5	133.1	0.3	0.0	742.9
1992	1.2	379.3	184.4	7.1	17.5	209.0	40.1	132.8	0.3	0.0	762.8
1993	1.0	384.2	173.3	8.9	15.1	197.3	53.0	136.0	0.3	0.1	772.0
1994	0.7	385.9	168.8	8.0	15.2	192.0	50.7	136.8	0.4	0.1	766.7
1995	0.7	381.0	164.3	7.1	15.8	187.2	51.6	135.9	0.4	0.1	756.9
1996	0.8	400.7	170.7	8.3	17.2	196.2	52.8	137.7	0.5	0.1	788.8
1997	0.7	377.3	167.5	9.9	15.3	192.8	82.6	137.0	0.5	0.1	790.9
1998	0.4	378.1	166.0	10.4	15.8	192.2	78.5	138.2	0.5	0.0	788.0
1999	0.6	396.5	170.6	13.0	16.9	200.5	78.3	145.8	0.5	0.1	822.2
2000	0.3	406.7	202.3	13.4	21.7	237.3	82.0	147.1	0.5	0.1	874.0
2001	0.3	404.8	219.7	13.4	17.0	250.0	55.9	150.7	0.5	0.1	862.4
2002	0.1	392.5	197.1	9.2	19.6	226.0	56.4	157.7	0.6	0.1	833.4
2003	0.3	406.5	197.1	9.4	18.4	225.0	58.5	160.7	0.6	0.1	851.6
2004	0.4	398.3	197.3	11.8	19.5	228.5	60.3	161.9	0.7	0.1	850.1
2005	0.3	411.5	201.8	12.6	17.7	232.1	50.4	171.4	0.8	0.1	866.7
2006	0.4	385.9	163.0	9.9	16.8	189.7	44.5	165.5	1.0	0.1	787.1
2007	0.3	405.8	172.7	7.5	18.2	198.4	49.4	171.6	1.1	0.2	826.8
2008	0.0	400.0	161.7	3.8	22.5	187.9	55.4	167.7	1.3	0.2	812.4
2009	0.0	403.7	117.4	5.6	22.3	145.3	23.6	165.6	1.3	0.2	739.8
2010	0.0	413.2	117.6	5.5	23.0	146.1	16.3	173.4	1.5	0.3	750.7
2011	0.0	417.6	109.6	4.0	20.4	134.0	16.7	174.7	1.6	0.7	745.2
2012	0.0	405.3	137.9	1.9	18.6	158.4	13.2	172.8	1.8	0.4	751.9
2013	0.0	426.7	103.9	2.3	19.2	125.4	22.0	173.2	2.0	0.4	749.7
2014	0.0	454.1	108.7	4.1	23.7	136.4	20.9	171.2	2.8	0.4	785.8
2015	0.0	464.0	121.0	2.6	22.3	145.9	36.4	173.9	4.3	0.4	824.9
2016	0.0	452.3	95.9	3.0	22.8	121.7	36.6	172.8	6.4	0.4	790.2
2017	0.0	466.1	88.3	2.0	23.0	113.3	34.6	167.7	8.1	0.4	790.3
2018	0.0	499.5	107.0	2.2	27.1	136.3	33.5	177.4	9.3	0.4	856.4
2019	0.0	486.9	105.1	3.3	28.1	136.5	35.2	171.3	10.6	0.4	840.9
2020	0.0	481.4	85.7	2.6	27.3	115.6	34.1	177.7	11.3	0.4	820.6
2021	0.0	484.7	97.8	2.5	26.6	126.9	29.9	177.6	12.2	0.4	831.8

¹ Distillate consumption estimates include biodiesel blended into diesel fuel.

² Includes customer-sited solar electric and thermal energy.

Appendix G-2

New York State Weather Normalized Residential Energy Intensity Indicators, 1990–2021

Figure G-2a. Residential Energy

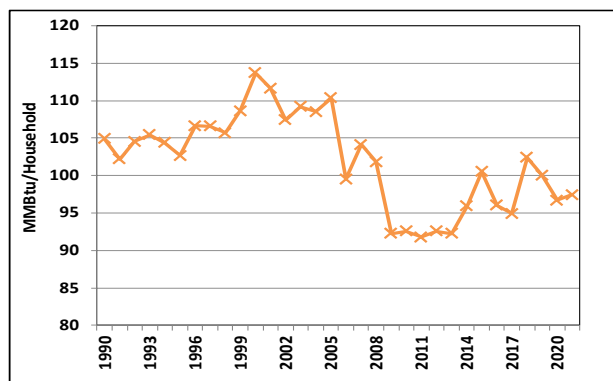


Figure G-2b. Residential Energy Usage/GSP (2021\$)

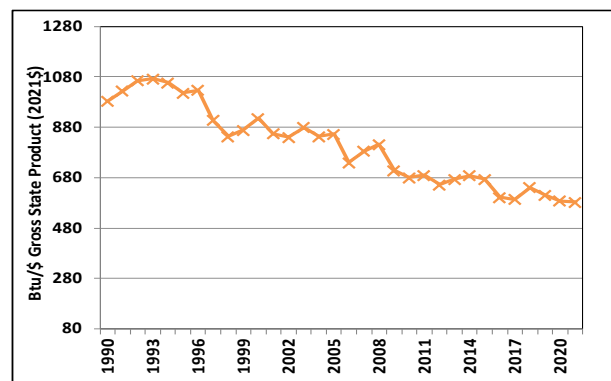


Table G-2. (In Trillion Btu)

Year	Weather Normalized Residential Total Energy	Households Thousands	Energy Usage/Household	Gross State Product Million (2018\$)	Res Energy Usage Per GSP (2020\$)
	Tbtu		(MMBtu/Household)		(Btu/\$)
1990	758.0	7,227	104.9	\$976,615	776.1
1991	742.9	7,270	102.2	\$945,052	786.1
1992	762.8	7,297	104.5	\$958,697	795.7
1993	772.0	7,324	105.4	\$962,713	801.9
1994	766.7	7,346	104.4	\$969,794	790.5
1995	756.9	7,374	102.6	\$989,487	765.0
1996	788.8	7,397	106.6	\$1,022,961	771.1
1997	790.9	7,423	106.6	\$1,159,093	682.4
1998	788.0	7,455	105.7	\$1,182,459	666.4
1999	822.2	7,572	108.6	\$1,231,247	667.8
2000	874.0	7,689	113.7	\$1,256,784	695.4
2001	862.4	7,724	111.6	\$1,276,929	675.4
2002	833.4	7,760	107.4	\$1,271,907	655.2
2003	851.6	7,799	109.2	\$1,269,503	670.9
2004	850.1	7,836	108.5	\$1,304,718	651.6
2005	866.7	7,853	110.4	\$1,341,340	646.1
2006	787.1	7,908	99.5	\$1,371,898	573.7
2007	826.8	7,940	104.1	\$1,385,225	596.9
2008	812.4	7,977	101.8	\$1,324,254	613.5
2009	739.8	8,018	92.3	\$1,388,525	532.8
2010	750.7	8,108	92.6	\$1,439,101	521.7
2011	745.2	8,120	91.8	\$1,423,592	523.5
2012	751.9	8,124	92.6	\$1,491,811	504.0
2013	749.7	8,126	92.3	\$1,513,117	495.5
2014	785.8	8,192	95.9	\$1,558,670	504.2
2015	824.9	8,207	100.5	\$1,622,226	508.5
2016	790.2	8,232	96.0	\$1,667,113	474.0
2017	790.3	8,327	94.9	\$1,698,755	465.3
2018	856.4	8,364	102.4	\$1,757,321	487.3
2019	840.9	8,404	100.1	\$1,794,123	468.7
2020	820.6	8,488	96.7	\$1,699,045	483.0
2021	831.8	8,537	129.8	\$1,901,297	582.8